

# CTI & CTH CENTRIFUGAL PUMPS

2020 | 1



## » All about your flow™

*We began our journey 40 years ago in Kungälv, a small town on the Swedish west coast, as a family company with an ambition to one day become a global player on the pump market.*

Since 1980, we have taken pride in delivering a wealth of knowledge and passion for pumps to the industry, whilst supplying a wide range of premium products for various industrial applications.

Over the years, the company has developed into a global Tapflo Group with branches and distributors present in nearly every region of the world.

One thing did not change - we are still a family company.

Our solutions are designed and manufactured in Europe and distributed globally to offer the best service and flow solutions to our customers for a variety of applications.

Our values, Commitment, Quality and Simplicity are reflected both in our product and business approach.



**For fast and flexible service and high-quality products readily available worldwide, choose Tapflo.**

## Quality commitment

At Tapflo we are simply committed to quality. As a result, our production standards, as well as products quality, comply with various globally recognised certification and quality control standards. The Tapflo manufacturing process is certified according to ISO 9001:2015, confirming that our processes are appropriate, effective, customer-focused and continuously improved.



## Tapflo values

Our culture is concluded in Our values

### Commitment

We are different from our competitors because of our willingness to exceed the customers' expectations, move fast and be flexible. Our culture is based on the spirit of togetherness, enthusiasm and integrity. We come from all over the world but we share the same values and we respect each other. We are committed.

### Quality

We understand that the quality in our work is never better than the weakest link, that's why we focus on every small detail. We share a common passion for continuously finding more efficient and effective ways to provide value to our customers. As a manufacturer we have control of the complete process both in terms of our products and the way we operate internally. That is why we manufacture the highest quality pumps in our segment.

### Simplicity

We have a saying, "Simple is art" which means we try to find smooth and uncomplicated solutions in everything. By keeping it simple we can focus on the essential, like designing uncomplicated pumps with few components. For us it is a key to success; strive to simplify what is complex.

# CT Centrifugal Pumps

The CT pumps are open or semi open impeller single stage centrifugal pumps. They are manufactured in high finish and mechanically strong material - AISI 316L stainless steel. The pump range meets the demands from a variety of today's industries. Having said that, CT is still available at a very appealing price level.

## Features & Benefits

- ✓ Simple and compact design
- ✓ Few parts
- ✓ Open impeller
- ✓ High grade materials
- ✓ High capacity
- ✓ Competitive price
- ✓ Low maintenance cost
- ✓ Multiple options
- ✓ Solids handling
- ✓ Wide range of applications

## Wide range of applications



### Food & beverage (CTH)

Transfer of various ingredients and products like edible oil, flavor, alcohol, dairy products and juice. With heating jacket version there are further possibilities like pumping margarine and chocolate. There are also many auxiliary applications like transfer of cleaning liquids and water.



### Chemical & pharma (CTI & CTH)

Transport of chemicals from storage tanks, containers and baths, for example in degreasing. Handling of waste products.



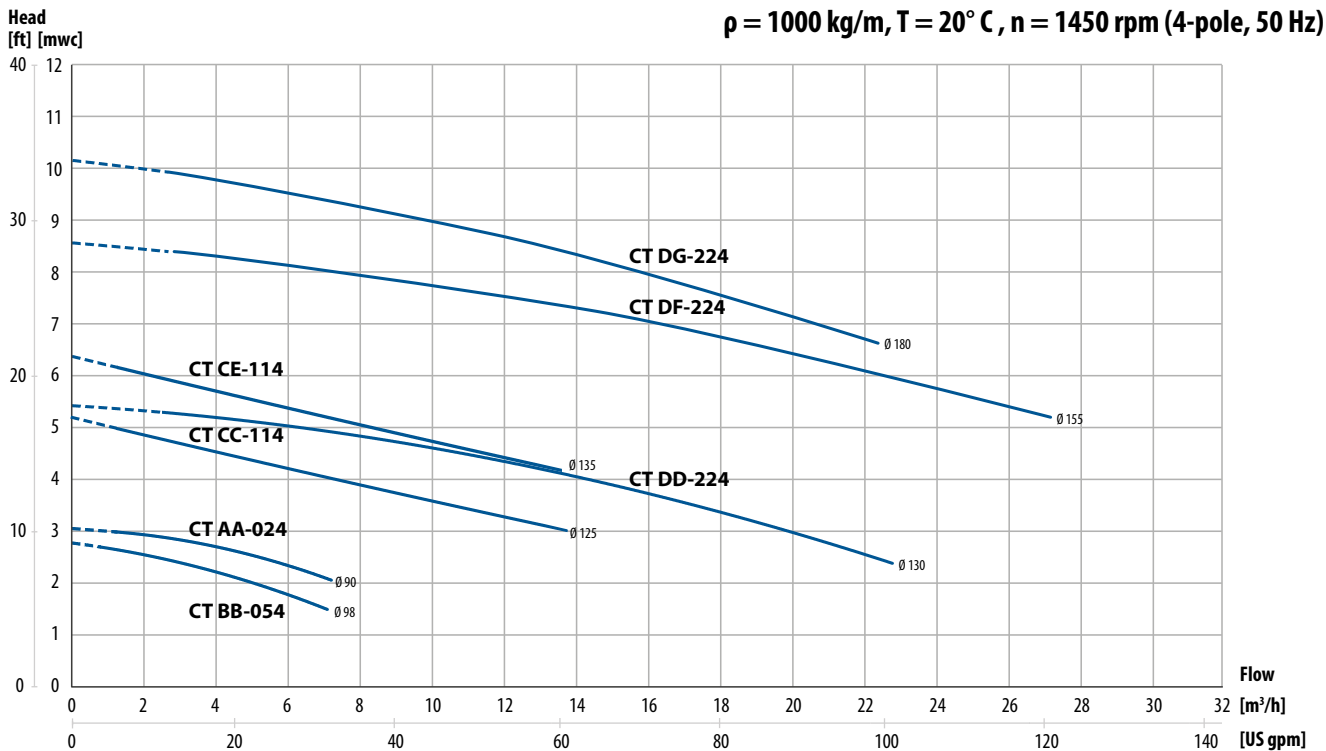
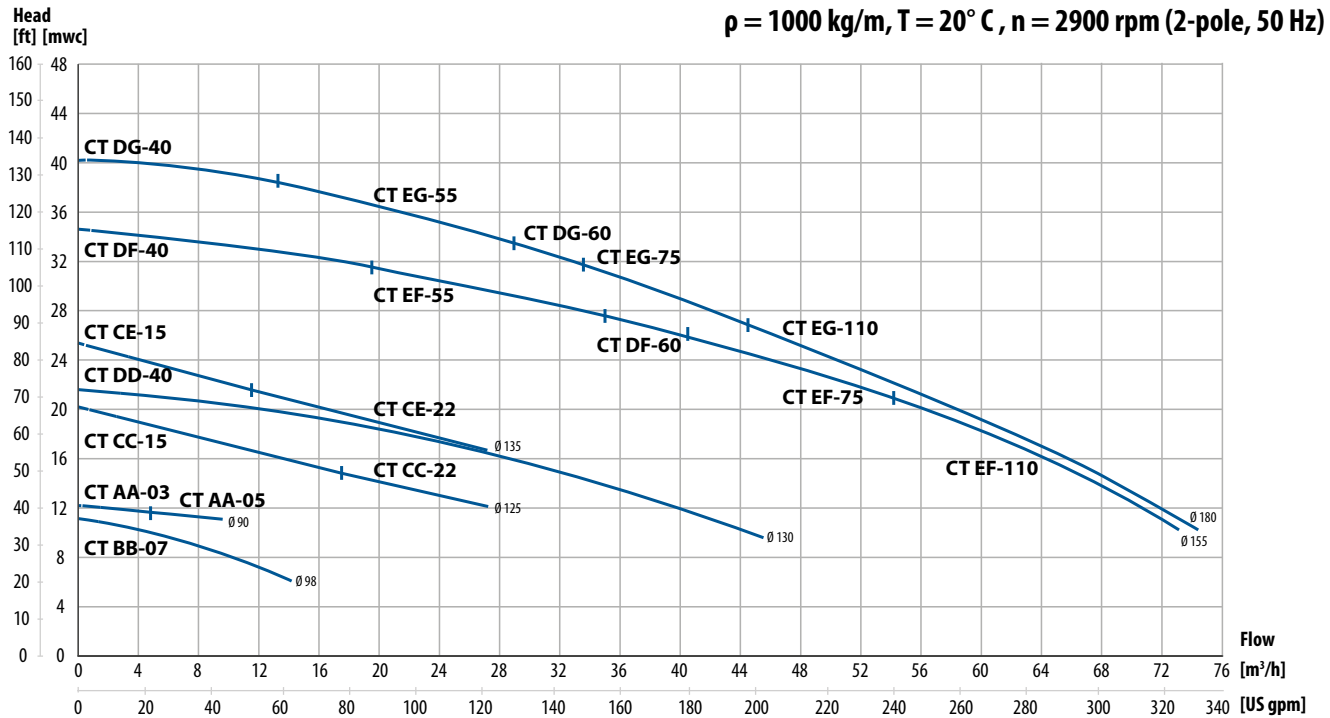
### Water treatment (CTI)

Pumping samples, dosing acids and alkalis for pH-control. Transfer of flocculent, suspensions, chemical reagents and sludges. Pumps are resistant to even most aggressive chemicals.



## Performance curves

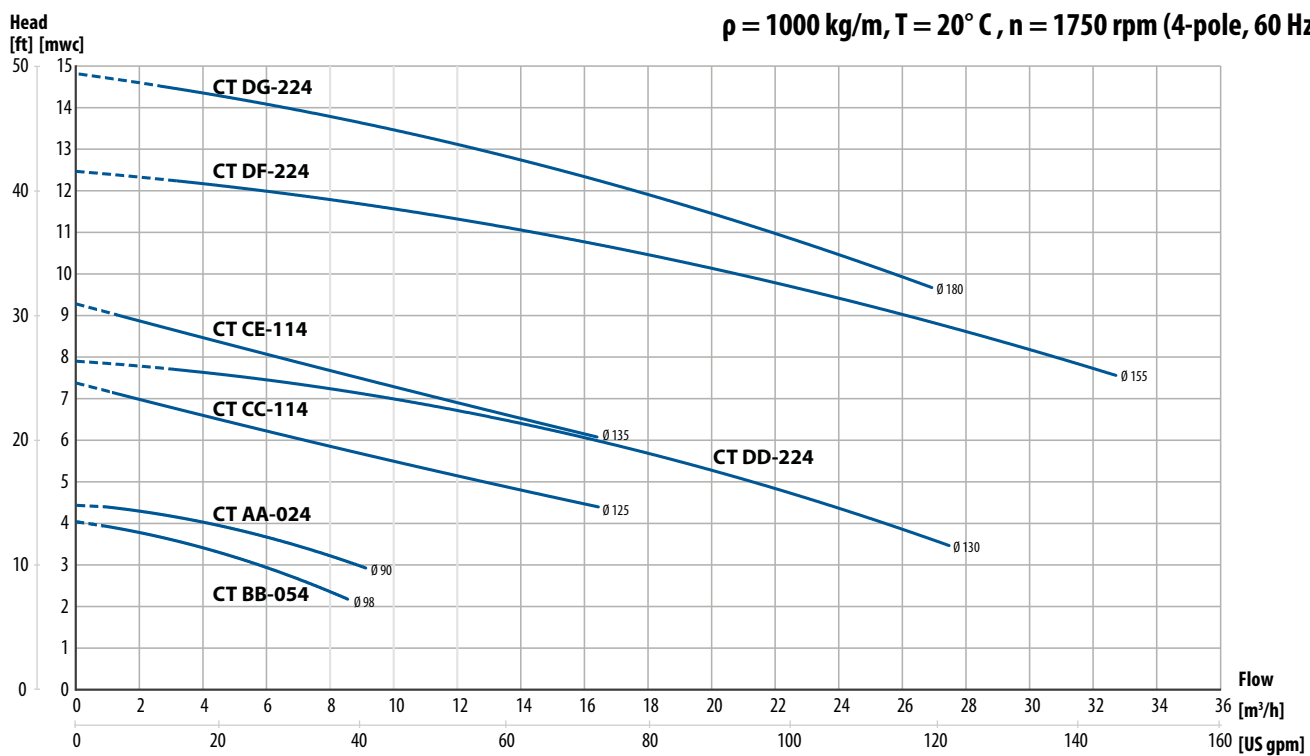
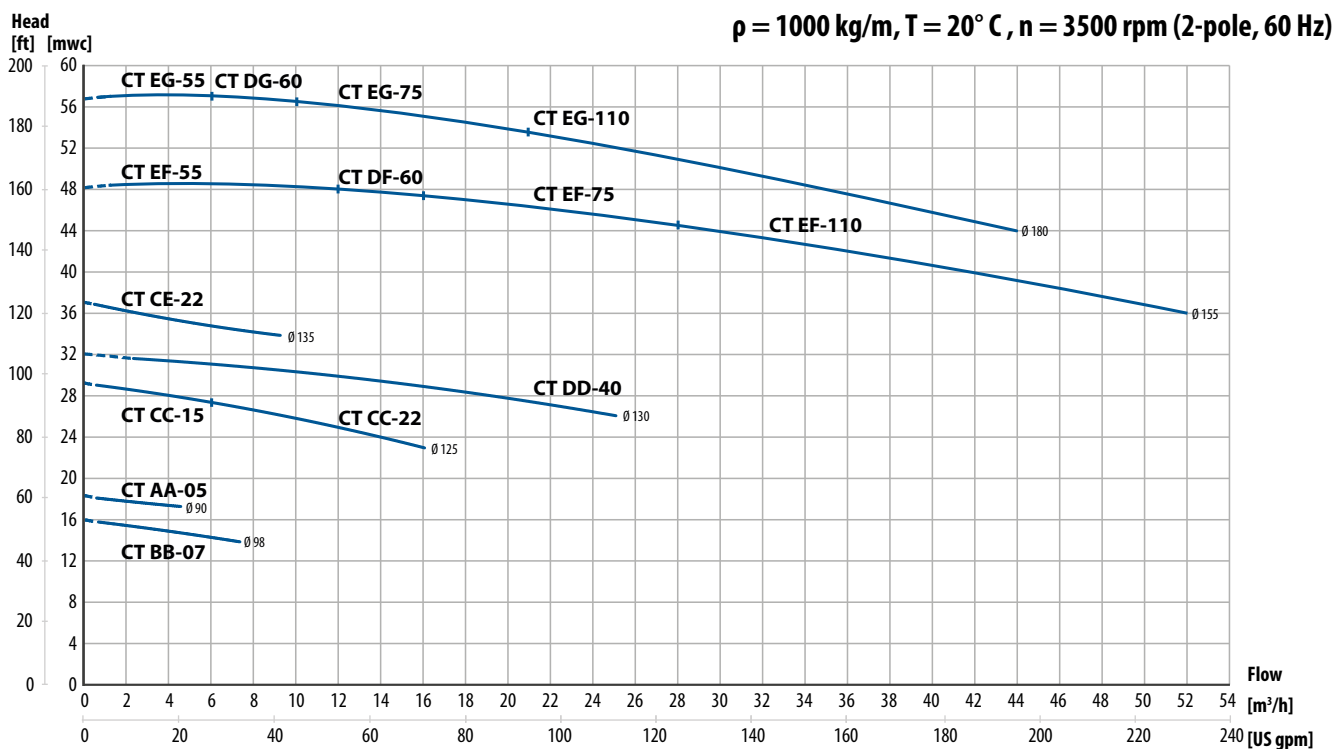
The performance curves are based on water.



Changes reserved without notice

# Performance curves

The performance curves are based on water.



Changes reserved without notice

# CTI - industrial series

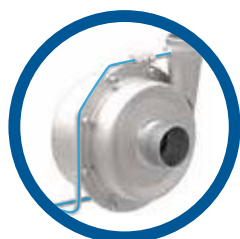
The industrial series CTI is designed with glass blasted pump casing. A variety of connection types, mechanical seal options and other executions are available to satisfy most industrial duties.

A very simple and ingenious design, with only 17 different components allows easy and quick maintenance.  
This results in very short downtime and extremely low maintenance costs.



CTI series :  
For industrial applications  
Glass-blasted pump casing

## Options and special executions



### ■ Flushed seal

Ideal **when abrasive or sticky particles are present**. System where a small amount of the pumped product is recirculated from the discharge side to the seal chamber through a strainer, will protect the mechanical seal and seal chamber from excessive wear.



### ■ Buffer fluid system

A great option **when the product tends to solidify or crystalize**.

A lube reservoir is connected to the air side of the mechanical seal.



### ■ Long coupled execution

The perfect solution **when pumping hot products** like oil at temperatures **up to 180°C**. Complete pump unit **mounted on baseplate, with coupling and cover**.



### ■ Casing drainage

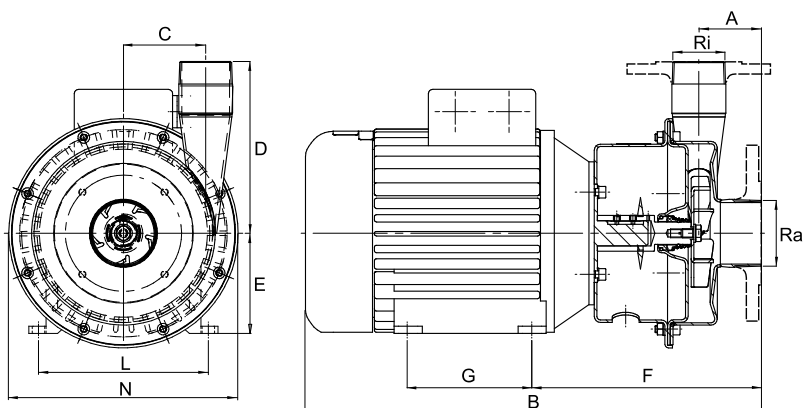
Plug at the bottom of the pump casing **allows draining**.



### ■ Flanged connections

**Instead of the standard BSPT** threaded connections, you can order CTI pumps with flanged connections according to **DIN (2633) or ANSI 150**.

## CTI - technical data



### Connection dimensions

| Model   | BSPT male thread (standard)* |        | DIN 2633/ PN16 flange |    | ANSI 150 flange |        |
|---------|------------------------------|--------|-----------------------|----|-----------------|--------|
|         | Ra                           | Ri     | Ra                    | Ri | Ra              | Ri     |
| CTI A.. | 1"                           | 3/4"   | 25                    | 20 | 1"              | 3/4"   |
| CTI B.. | 1 1/2"                       | 1"     | 40                    | 25 | 1 1/2"          | 1"     |
| CTI C.. | 1 1/2"                       | 1 1/2" | 40                    | 40 | 1 1/2"          | 1 1/2" |
| CTI D.. | 2 1/2"                       | 2"     | 65                    | 50 | 2 1/2"          | 2"     |
| CTI E.. | 2 1/2"                       | 2"     | 65                    | 50 | 2 1/2"          | 2"     |

\* = NPT thread available as option

### General dimensions

| Model        | Motor power (kW) | IEC motor size | A  | B** | C  | D   | E   | F   | G   | L   | N   |
|--------------|------------------|----------------|----|-----|----|-----|-----|-----|-----|-----|-----|
| CTI AA-03    | 0.37             | 71             | 60 | 358 | 36 | 100 | 71  | 193 | 90  | 112 | 145 |
| CTI AA-05    | 0.55             | 71             | 60 | 358 | 36 | 100 | 71  | 193 | 90  | 112 | 145 |
| CTI BB-07    | 0.75             | 80             | 63 | 395 | 50 | 110 | 80  | 205 | 100 | 125 | 170 |
| CTI CC-15    | 1.5              | 90             | 64 | 451 | 68 | 160 | 90  | 226 | 125 | 140 | 205 |
| CTI CC-22    | 2.2              | 90             | 64 | 451 | 68 | 160 | 90  | 226 | 125 | 140 | 205 |
| CTI CE-22    | 2.2              | 90             | 64 | 451 | 68 | 160 | 90  | 226 | 125 | 140 | 205 |
| CTI DD-40    | 4.0              | 112            | 70 | 510 | 92 | 192 | 112 | 257 | 140 | 190 | 256 |
| CTI DF-40    | 4.0              | 112            | 70 | 510 | 92 | 192 | 112 | 257 | 140 | 190 | 256 |
| CTI DF-60*** | 6.0              | 112            | 70 | 521 | 92 | 192 | 112 | 262 | 140 | 190 | 256 |
| CTI DG-60*** | 6.0              | 112            | 70 | 521 | 92 | 192 | 112 | 262 | 140 | 190 | 256 |
| CTI EF-55    | 5.5              | 132            | 70 | 587 | 92 | 192 | 132 | 304 | 140 | 216 | 256 |
| CTI EG-55    | 5.5              | 132            | 70 | 587 | 92 | 192 | 132 | 304 | 140 | 216 | 256 |
| CTI EF-75    | 7.5              | 132            | 70 | 587 | 92 | 192 | 132 | 304 | 140 | 216 | 256 |
| CTI EG-75    | 7.5              | 132            | 70 | 587 | 92 | 192 | 132 | 304 | 140 | 216 | 256 |
| CTI AA-024   | 0.25             | 71             | 60 | 358 | 36 | 100 | 71  | 193 | 90  | 112 | 145 |
| CTI BB-054   | 0.55             | 80             | 63 | 395 | 50 | 110 | 80  | 205 | 100 | 125 | 170 |
| CTI CC-114   | 1.1              | 90             | 64 | 451 | 68 | 160 | 90  | 226 | 125 | 140 | 205 |
| CTI CE-114   | 1.1              | 90             | 64 | 451 | 68 | 160 | 90  | 226 | 125 | 140 | 205 |
| CTI DD-224   | 2.2              | 100            | 70 | 478 | 92 | 192 | 100 | 250 | 140 | 160 | 256 |
| CTI DF-224   | 2.2              | 100            | 70 | 478 | 92 | 192 | 100 | 250 | 140 | 160 | 256 |
| CTI DG-224   | 2.2              | 100            | 70 | 478 | 92 | 192 | 100 | 250 | 140 | 160 | 256 |

\*\* = This dimension may vary depending on motor brand

\*\*\* = Special motor with increased power. Not available in EX-proof (ATEX) version

### Materials, data and limits

|                        |  |
|------------------------|--|
| <b>Casing</b>          | Glass blasted AISI 316L stainless steel  |
| <b>Impeller</b>        | Electro polished AISI 316L stainless steel, open (standard) or optional semi-open type                       |
| <b>Mechanical seal</b> | Single ceramic/graphite (standard), SiC/SiC or SiC/graphite, optionally with buffer fluid system or flushing |
| <b>O-rings</b>         | EPDM (standard), FKM, FEP/silicone or NBR  |
| <b>Motor</b>           | P55, IEC frame B3/B14 (B3 on long coupled version). Available with ATEX cat 2 or 3, Ex e or Ex d motor       |
| <b>Max pressure</b>    | 10 bar (PN10)  |
| <b>Temperature</b>     | max 90°C, max 180°C for long coupled version   |
| <b>Viscosity</b>       | max ~200 cSt   |
| <b>Particles</b>       | max diameter 6 mm (with standard open impeller), bigger if soft particles                                    |

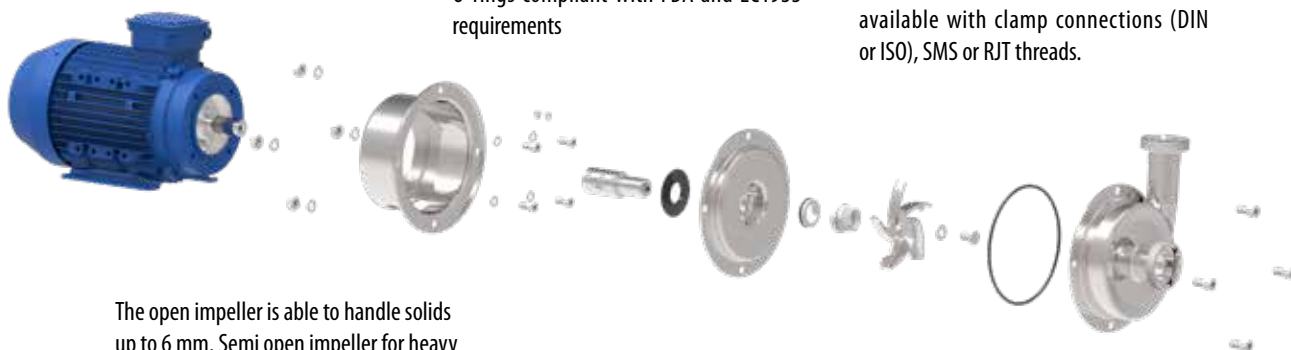
Changes reserved without notice

# CTH - hygienic series

The hygienic series CTH is supplied with electro polished pump casing and internals. This series is dedicated for hygienic duties in food, beverage and pharmaceutical industries, where clean and drain-ability are important factors.

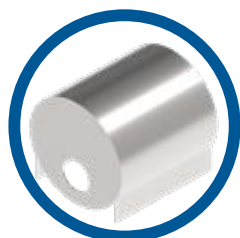
Standard single mechanical seal provides a wide range of seal face materials - ceramic, graphite, SiC and EPDM, FKM, NBR, FEP O-rings compliant with FDA and EC1935 requirements

Hygienic connections DIN 11851 (thread) are standard on the CTH series. It is also available with clamp connections (DIN or ISO), SMS or RJT threads.



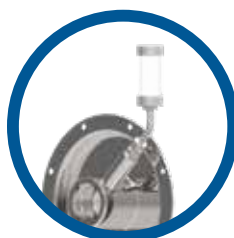
The open impeller is able to handle solids up to 6 mm. Semi open impeller for heavy duty applications is available as an option.

## Options and special executions



### ■ Hygienic shroud

The hygienic motor shroud in polished AISI 316L **protects the motor from spraying water during pump cleaning procedure.**



### ■ Buffer fluid system

A great option **when the product tends to solidify or crystalize.**

A lube reservoir is connected to the air side of the mechanical seal.



### ■ Long coupled execution

The perfect solution **when pumping hot products** like edible oil. Complete pump unit **mounted on baseplate, with coupling and cover.**



### ■ Casing drainage

Plug at the bottom of the pump casing **allows draining** of the pumped liquid.



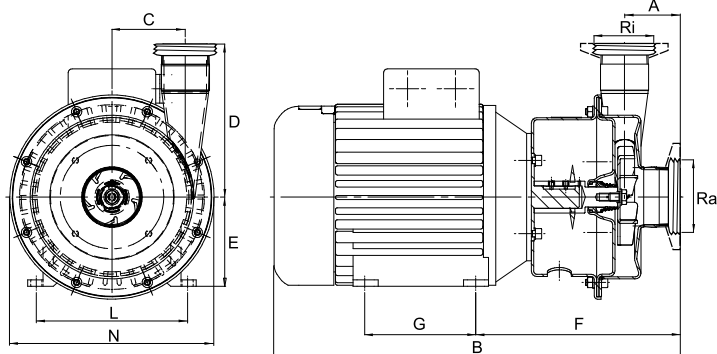
### ■ Heating jacket

Great **protection for the mechanical seal** in cases where there is a **risk for solidifying of the product.**

The heating jacket is also **used when the pumped product has to maintain a specific temperature**, high or low. A heating or cooling medium is continuously circulated in the jacket.



# CTH - technical data



## Connection dimensions

| Connection type             | Dim | Model CTH |        |     |     |     |
|-----------------------------|-----|-----------|--------|-----|-----|-----|
|                             |     | A..       | B..    | C.. | D.. | E.. |
| DIN 11851 thread (standard) | Ra  | 25        | 40     | 40  | 65  | 65  |
|                             | Ri  | 25        | 32     | 40  | 50  | 50  |
| DIN 32676 clamp             | Ra  | 25        | 40     | 40  | 65  | 65  |
|                             | Ri  | 20        | 25     | 40  | 50  | 50  |
| SMS 3017 clamp              | Ra  | 38        | 38     | 38  | 70  | 70  |
|                             | Ri  | 25        | 25     | 38  | 51  | 51  |
| SMS 1145 thread             | Ra  | 38        | 51     | 51  | 63  | 63  |
|                             | Ri  | 25        | 38     | 38  | 51  | 51  |
| RJT thread                  | Ra  | 1 1/2"    | 1 1/2" | 2"  | 3"  | 3"  |
|                             | Ri  | 1"        | 1 1/2" | 2"  | 2"  | 2"  |

## General dimensions

| Model        | Motor power (kW) | IEC motor size | A  | B** | C  | D   | E   | F   | G   | L   | N   |
|--------------|------------------|----------------|----|-----|----|-----|-----|-----|-----|-----|-----|
| CTH AA-03    | 0.37             | 71             | 60 | 358 | 36 | 100 | 71  | 193 | 90  | 112 | 145 |
| CTH AA-05    | 0.55             | 71             | 60 | 358 | 36 | 100 | 71  | 193 | 90  | 112 | 145 |
| CTH BB-07    | 0.75             | 80             | 63 | 395 | 50 | 110 | 80  | 205 | 100 | 125 | 170 |
| CTH CC-15    | 1.5              | 90             | 64 | 451 | 68 | 160 | 90  | 226 | 125 | 140 | 205 |
| CTH CC-22    | 2.2              | 90             | 64 | 451 | 68 | 160 | 90  | 226 | 125 | 140 | 205 |
| CTH CE-22    | 2.2              | 90             | 64 | 451 | 68 | 160 | 90  | 226 | 125 | 140 | 205 |
| CTH DD-40    | 4.0              | 112            | 70 | 510 | 92 | 192 | 112 | 257 | 140 | 190 | 256 |
| CTH DF-40    | 4.0              | 112            | 70 | 510 | 92 | 192 | 112 | 257 | 140 | 190 | 256 |
| CTH DF-60*** | 6.0              | 112            | 70 | 521 | 92 | 192 | 112 | 262 | 140 | 190 | 256 |
| CTH DG-60*** | 6.0              | 112            | 70 | 521 | 92 | 192 | 112 | 262 | 140 | 190 | 256 |
| CTH EF-55    | 5.5              | 132            | 70 | 587 | 92 | 192 | 132 | 304 | 140 | 216 | 256 |
| CTH EG-55    | 5.5              | 132            | 70 | 587 | 92 | 192 | 132 | 304 | 140 | 216 | 256 |
| CTH EF-75    | 7.5              | 132            | 70 | 587 | 92 | 192 | 132 | 304 | 140 | 216 | 256 |
| CTH EG-75    | 7.5              | 132            | 70 | 587 | 92 | 192 | 132 | 304 | 140 | 216 | 256 |
| CTH AA-024   | 0.25             | 71             | 60 | 358 | 36 | 100 | 71  | 193 | 90  | 112 | 145 |
| CTH BB-054   | 0.55             | 80             | 63 | 395 | 50 | 110 | 80  | 205 | 100 | 125 | 170 |
| CTH CC-114   | 1.1              | 90             | 64 | 451 | 68 | 160 | 90  | 226 | 125 | 140 | 205 |
| CTH CE-114   | 1.1              | 90             | 64 | 451 | 68 | 160 | 90  | 226 | 125 | 140 | 205 |
| CTH DD-224   | 2.2              | 100            | 70 | 478 | 92 | 192 | 100 | 250 | 140 | 160 | 256 |
| CTH DF-224   | 2.2              | 100            | 70 | 478 | 92 | 192 | 100 | 250 | 140 | 160 | 256 |
| CTH DG-224   | 2.2              | 100            | 70 | 478 | 92 | 192 | 100 | 250 | 140 | 160 | 256 |

\*\* = This dimension may vary depending on motor brand

\*\*\* = Special motor with increased power. Not available in EX-proof (ATEX) version

## Materials, data and limits

|                        |  |
|------------------------|--|
| <b>Casing</b>          | Electro polished Ra <0.8 AISI 316L stainless steel   |
| <b>Impeller</b>        | Electro polished Ra <0.8 AISI 316L stainless steel, open (standard) or optional semi-open type               |
| <b>Mechanical seal</b> | Single ceramic/graphite (standard), SiC/SiC or SiC/graphite, optionally with buffer fluid system or flushing |
| <b>O-rings</b>         | EPDM, FKM, NBR, FEP compliant with FDA and EC1935 requirements   |
| <b>Motor</b>           | IP55, IEC frame B3/B14 (B3 on long coupled version). Available with ATEX cat 2 or 3, Ex e or Ex d motor      |
| <b>Max pressure</b>    | 10 bar (PN10)  |
| <b>Temperature</b>     | max 90°C, max 180°C for long coupled version   |
| <b>Viscosity</b>       | max ~200 cSt   |
| <b>Particles</b>       | max diameter 6 mm (with standard open impeller), bigger if soft particles                                    |

Changes reserved without notice

# Ordering a CT pump

CTI and CTH series are available in standard versions from stock as well as special executions to suit any requirements. When ordering, please follow below example.

## CT Pump code

I. **CT** II. **I** III. **C** IV. **C** - V. **1CGV3F-** VI. **03** VII. **M**

I. CT = Tapflo centrifugal pump

II. Pump execution:

I = Industrial

H = Hygienic

III. Casing size (motor flange diameter / IEC size):

A = 105 mm / 71

B = 120 mm / 80

C = 140 mm / 90

D = 160 mm / 100 or 112

E = 200 mm / 132

IV. Impeller size

A = 90 mm

B = 98 mm

C = 125 mm

D = 130 mm (reinforced as standard)

E = 135 mm

F = 155 mm (reinforced as standard)

G = 180 mm (reinforced as standard)

V. Pump options:

1. Mechanical seal:

Blank\* = ceramic/graphite/EPDM (FDA on CTH)

1CGV = ceramic/graphite/FKM (FDA on CTH)

1CGF = ceramic/graphite/FEP (FDA)

1CGN = ceramic/graphite/NBR (FDA on CTH)

1SSE = SiC/SiC/EPDM (FDA on CTH)

1SSV = SiC/SiC/FKM (FDA on CTH)

1SSF = SiC/SiC/FEP (FDA)

1SSN = SiC/SiC/NBR (FDA on CTH)

1SGE = SiC/graphite/EPDM (FDA on CTH)

1SGV = SiC/graphite/FKM (FDA on CTH)

1SGF = SiC/graphite/FEP (FDA)

1SGN = SiC/graphite/NBR (FDA on CTH)

2. Mechanical seal type:

P = Standard mechanical seal with OP-ring

K = Different hardness of static and dynamic seal

elements – J/D with OP-ring (SiC/SiC only)

3. Connection options

Blank\* = Thread BSPT on CTI

Thread DIN 11851 on CTH

3A = ANSI flange

3B = BSPT thread (on CTH)

3C = Clamp SMS3017 (CTH only)

3F = Flange DIN2633 PN 10/16

3T = Clamp DIN 32676 (CTH only)

3S = Thread SMS 1145 (CTH only)

3R = Thread RJT (CTH only)

3P = ISO 1127 clamp (CTH only)

3DA = DIN11866-1A thread (CTH only)

3X = Thread DIN 11851 (on CTI)

4. Special executions

4J = Pump with heating jacket

4F = Flushed seal

4Z = Buffer liquid system

4H = Semi open heavy duty impeller (C-G sizes)

4K = Drain plug (3/8" BSP thread as standard)

4PX = Welds polishing (CTH only)

4W = Reinforced impeller

4Q = External quench

4B = Reinforced front cover; special O-ring

40 = Increased number of mounting holes

VI. Motor power / IEC motor size

2900 rpm motors (2-pole):

03 = 0.37 kW / 71

05 = 0.55 kW / 71

07 = 0.75 kW / 80

15 = 1.5 kW / 90

22 = 2.2 kW / 90

40 = 4.0 kW / 112

55 = 5.5 kW / 132

60 = 6.0 kW / 112

75 = 7.5 kW / 132

110 = 11.0 kW / 160 (long coupled pump only)

1450 rpm motors (4-pole):

024 = 0.25 kW / 71

054 = 0.55 kW / 80

114 = 1.1 kW / 90

224 = 2.2 kW / 100

VII. Motor options

M = Hygienic motor shroud (CT H)

B = Long coupled pump

P = Single phase motor

X2d = Ex d IIB T4 motor

X2e = Ex e IIB T3 motor

X3e = Ex II 3G T135C motor - tropic

T = Motor with PTC thermistor

V...F... = Motor for special voltage, frequency

\* = standard execution

## Special executions and options

### Big choice of sealing solutions

The CTI & CTH pump range features top brand mechanical seals in a variety of materials to suit most type of liquids. They are available in combinations of ceramic, graphite and SiC.

### Semi-open impeller

Tapflo CT pumps can be fitted with a semi-open impeller in comparison to its standard open impeller. This option ensures more stable operation, lower noise, lower vibrations and more robust construction. It is recommended to use the semi-open impeller when hard solids can be present in the pumped liquid.



# Product range

## Diaphragm pumps & accessories



## Centrifugal pumps, filter units & accessories



## Sweden

Filaregatan 4 | S-442 34 Kungälv

Tel: +46 303 63390

Fax: +46 303 19916

E-mail addresses:

Commercial questions: [sales@tapflo.com](mailto:sales@tapflo.com)

Orders: [order@tapflo.com](mailto:order@tapflo.com)

Tech support: [support@tapflo.com](mailto:support@tapflo.com)

## Tapflo products and services are available in 75 countries on 6 continents.

Tapflo is represented worldwide by own Tapflo Group Companies and carefully selected distributors assuring highest Tapflo service quality for our customers' convenience.

AUSTRALIA | AUSTRIA | AZERBAIJAN | BAHRAIN | BELARUS | BELGIUM | BOSNIA | BRAZIL | BULGARIA | CANADA | CHILE | CHINA | COLOMBIA | CROATIA | CZECH REPUBLIC | DENMARK | ECUADOR | EGYPT | ESTONIA | FINLAND | FRANCE | GREECE | GEORGIA | GERMANY | HONG-KONG | HUNGARY | ICELAND | INDIA | INDONESIA | IRAN | IRELAND | ISRAEL | ITALY | JAPAN | JORDAN | KAZAKHSTAN | KUWAIT | LATVIA | LIBYA | LITHUANIA | MACEDONIA | MALAYSIA | MEXICO | MONTENEGRO | MOROCCO | NETHERLANDS | NEW ZEALAND | NORWAY | POLAND | PORTUGAL | PHILIPPINES | QATAR | ROMANIA | RUSSIA | SAUDI ARABIA | SERBIA | SINGAPORE | SLOVAKIA | SLOVENIA | SOUTH AFRICA | SOUTH KOREA | SPAIN | SUDAN | SWEDEN | SWITZERLAND | SYRIA | TAIWAN | THAILAND | TURKEY | UKRAINE | UNITED ARAB EMIRATES | UNITED KINGDOM | USA | UZBEKISTAN | VIETNAM

## Tapflo Group Companies

### Australia

Tapflo Oceania (Pty)  
Tel: +61 1800 303 633  
[sales@tapflo.com.au](mailto:sales@tapflo.com.au)

### Austria

Tapflo Austria  
Tel: +43 732 27292910  
[sales@tapflo.at](mailto:sales@tapflo.at)

### Baltic States

Tapflo Latvia  
Tel: +371 67472205  
[sales@tapflo.lv](mailto:sales@tapflo.lv)

### Belarus

Tapflo Belarus  
Tel: +375 17 3934609  
[sales@tapflo.by](mailto:sales@tapflo.by)

### Belgium

Tapflo Benelux B.V.  
Tel: +31 (0)85 00 743 00  
[info@tapflo.nl](mailto:info@tapflo.nl)

### Bulgaria

Tapflo EOOD  
Tel: +359 (0)2 974 18 54  
[office@tapflo.bg](mailto:office@tapflo.bg)

### Canada

Tapflo Canada  
Tel: +1 514 813 5754  
[canada@tapflo.com](mailto:canada@tapflo.com)

### Croatia

Tapflo GmbH  
Tel: +385 91 4884 666  
[sales@tapflo.hr](mailto:sales@tapflo.hr)

### Czech Republic

Tapflo s.r.o.  
Tel: +420 513 033 924  
[tapflo@tapflo.cz](mailto:tapflo@tapflo.cz)

### China

Tapflo (Wuxi)  
Tel: +86 510 8241 7072  
[sales@tapflo.cn](mailto:sales@tapflo.cn)

### Denmark

Tapflo Danmark  
Tel: +45 36 454600  
[info@tapflo.dk](mailto:info@tapflo.dk)

### France

Tapflo France  
Tel: +33 1 34 78 82 40  
[info@tapflo.fr](mailto:info@tapflo.fr)

### India

Tapflo Fluid Handling India Pvt Ltd  
Tel: +91 20 65000215  
[ac@tapflo.in](mailto:ac@tapflo.in)

### Ireland

Tapflo Ireland Ltd  
Tel: +353 1 2011911  
[info@tapflo.ie](mailto:info@tapflo.ie)

### Italy

Tapflo Italia  
Tel: +39 0362307698  
[info@tapfloitalia.com](mailto:info@tapfloitalia.com)

### Japan

Tapflo Japan K.K.  
Tel: +81-3-6240-3510  
[tapflojp@tapflo.co.jp](mailto:tapflojp@tapflo.co.jp)

### Kazakhstan

Tapflo Kazakhstan  
Tel: +7 727 3278347  
[sales@tapflo.kz](mailto:sales@tapflo.kz)

### Netherlands

Tapflo Benelux B.V.  
Tel: +31 (0)85 00 743 00  
[info@tapflo.nl](mailto:info@tapflo.nl)

### Poland

Tapflo Sp. z o.o.  
Tel: +48 58 530 42 12  
[info@tapflo.pl](mailto:info@tapflo.pl)

### Romania

S.C. Tapflo Rom. S.r.l.  
Tel: +40 21 3451255  
[sales@tapflo.ro](mailto:sales@tapflo.ro)

### Russia

Tapflo Company  
Tel: +7 495 232 18 28  
[sales@tapflo.com.ru](mailto:sales@tapflo.com.ru)

### Serbia

Tapflo d.o.o.  
Tel: +381 21 44 58 08  
[sales@tapflo.rs](mailto:sales@tapflo.rs)

### Slovakia

Tapflo s.r.o.  
Tel: +421 911 137 883  
[tapflo@tapflo.sk](mailto:tapflo@tapflo.sk)

### Slovenia

Tapflo GmbH  
Tel: +386 68 613 474  
[sales@tapflo.hr](mailto:sales@tapflo.hr)

### Spain

Tapflo Iberica  
Tel: +34 91 8093182  
[avives@tapfloiberica.es](mailto:avives@tapfloiberica.es)

### South Africa

Tapflo (Pty) Ltd  
Tel: +27 31 701 5255  
[sales@tapflo.co.za](mailto:sales@tapflo.co.za)

### Turkey

Tapflo Makina Ltd  
Tel: +90 216 467 33 11  
[sales@tapflo.com.tr](mailto:sales@tapflo.com.tr)

### Ukraine

TOB Tapflo  
Tel: +380 44 222 68 44  
[sales@tapflo.ua](mailto:sales@tapflo.ua)

### Uzbekistan

Tapflo Uzbekistan  
Tel: +998 712370940  
[sales@tapflo.uz](mailto:sales@tapflo.uz)

### United Kingdom

Tapflo (UK) Ltd  
Tel: +44 2380 252325  
[sales@tapflo pumps.co.uk](mailto:sales@tapflo pumps.co.uk)